

QTC®

QTC®
Quick-Tool-Change

RPG 4.5, RPG 8.6

Tube Squaring Machines

The clean and high value solution for specific welding preparations

Designed for burr-free squaring of thin-walled stainless steel tubes up to OD 114.3 mm (4.5") or OD 219.1 mm (8.6"). Clean and secure working area with clear view cutting head. Machine with removable bench stand.

Advantages:

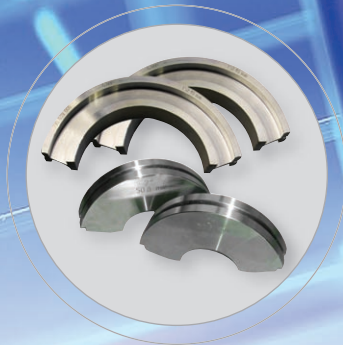
- Squaring tube ends with high-quality surface
- Burr-free and square
- Quick clamping system for tools, clamping shells and tubes
- Preparation of thin-walled stainless steel tubes (V4A)
- High-performance coated tool bit with two cutting edges
- Built-in electronic speed regulation
- Micrometer feed for optimum results
- No additional tools required for operation
- Portable machine for a mobile and secure application

Your benefits:

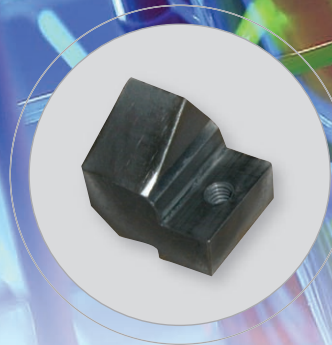
- Reduced tool costs
- Reduced manufacturing costs
- Increased productivity
- Extremely durable



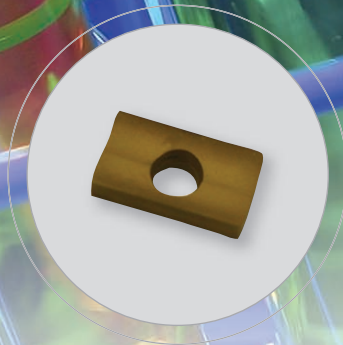
Application



A wide range of **stainless steel clamping shells** (for RPG 8.6 also made from **aluminum**). Extremely durable. The two-piece-design with click mechanism ensures accurate centring and quick clamping shell change without any tools.



Including **tool holder WH**: Usable for all RPG 4.5 and RPG 8.6 machines.
Code 790 038 320



Including **multifunctional tool MFW**: Two-sided tool bit with high-performance Balinit® Futura protective coating against tool wear. Usable for all machines of the RPG series.
Code 790 038 314



Including **durable storage and shipping case**: High-quality blue transportation case with insert. Very sturdy design.

Tube Squaring Machines

Technical data	RPG 4.5	RPG 8.6
Dimensions [mm]	525 x 256 x 226	630 x 390 x 340
Dimensions [inch]	20.7 x 10 x 8.9	24.8 x 15.4 x 13.4
Weight (without clamping shells)	10.2 kg	20.5 kg
Power rating	1010 W	1010 W
Power versions	200 - 240 V, 50/60 Hz EU (Code 790 038 001) 100 - 120 V, 50/60 Hz EU (Code 790 038 003)	200 - 240 V, 50/60 Hz EU (Code 790 039 001) 100 - 120 V, 50/60 Hz EU (Code 790 039 003)
Speed (max. idling speed)	8 - 52 rpm	7 - 18 rpm
Vibration level according to EN 28662, Part 1	2.5 m/s ²	2.5 m/s ²
Noise level at the workplace	Idle running approx. 83 dB (A)	Idle running approx. 83 dB (A)

Working range

Tube OD [mm]	25.4 - 114.3	50.8 - 219.1
Tube OD [inch]	1 - 4.5	2 - 8.6
Wall thickness max. [mm]	3	3
Wall thickness max. [inch]	0.118	0.118
Tube materials	High-alloy steels, unalloyed and low-alloy steels and aluminum. Others on request.	

The technical data are not binding. They are not warranted and characteristics are subject to change. Please consult our General Conditions of Supply.

Info-Hotline: +49 (0) 77 31 792-787 up to 789