

# REB 6, REB 14 REB 20

## Pipe End Preparation Machines

### The Powerful Pipe End Preparation Solution

#### More innovations result in more benefits!

The portable pipe end preparation machine REB sets new standards in the weld prepping of metal pipes.

#### Advantages:

- Tool system QTC® (Quick-Tool-Change):
  - Multifunctional tools
  - Balinit® Futura protection coating against tool wear
  - Quick clamping tool system
- Characteristic housing
- Functional pipe clamping
- Optimized drive system

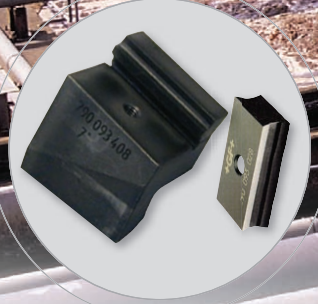
#### Take advantage of this latest technology:

- Reduce your tool costs
- Reduce your manufacturing costs
- Increase your productivity when making precise and reproduceable weld prep profiles, both on site and in the prefab workshop.

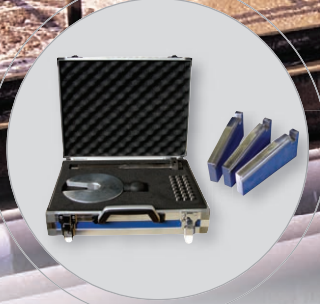


Quick Tool Change System QTC®

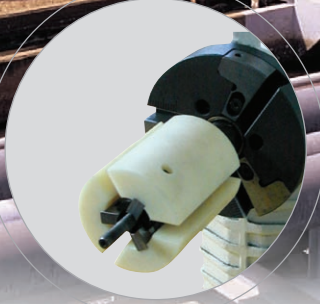




A wide range of **tool holder WH** and **multifunctional tools MFW**: Two or four-sided tool bits with high-performance protective coating against tool wear. For different wall thicknesses and weld prep profiles.



**Elbow clamping system for REB 6.** For preparing elbows with ID 75 – 157 mm (2.95 – 6.18 inch). **Code 790 093 015**  
**Optional clamping wedges:** To extend the dimension of the REB standard REB 6 and REB 14 machines.



**Customised plastic (POM) clamping shell segments** for thin-walled pipes. Deformation-free clamping system for REB 6 and REB 14 for pipe ID 108.2 – 347.7 mm (4.260 – 13.689 inch).



**Cutting lubrication KSS-TOP:** The water soluble, fully synthetic cooling fluid extends the tool life of the tool bits. Pump sprayer (500 ml): **Code 790 060 226**  
Canister (10 l): **Code 790 060 227**

## Pipe End Preparation Machines

Technical data	REB 6 P	REB 6 E	REB 14 P	REB 14 E	REB 20 P
Code (EU)	790 093 001	790 093 002	790 094 001	790 094 002	790 094 010
Dimensions [mm]	560 x 260 x 400	640 x 260 x 420	625 x 375 x 490	700 x 375 x 510	700 x 510 x 570
Dimensions [inch]	22 x 10.2 x 15.8	25.2 x 10.2 x 16.5	24.6 x 14.8 x 19.3	27.6 x 14.8 x 20	27.6 x 20 x 22.4
Weight [kg]	27.0	28.0	45.0	46.0	55
Power [kW] / [HP]	1.8 / 2.45	1.2 / 1.63	1.8 / 2.45	1.2 / 1.63	1.8 / 2.45
Air consumption [m <sup>3</sup> /min at 6 bar/90 psi]	2.0	–	2.0	–	2.0
Mains supply	–	230 V, 50/60 Hz	–	230 V, 50/60 Hz	–
Speed [min <sup>-1</sup> ]	0 – 26	10 – 32	0 – 13	5 – 16	0 – 13
Vibration level according to EN 28662, Part 1 [m/s <sup>2</sup> ]	< 2.5	< 2.5	< 2.5	< 2.5	< 2.5
Noise level in the workplace [dB (A)]	at idle-speed: approx. 75 (average speed range); under load: approx. 77				

Working range*	REB 6 P / E	REB 14 P / E	REB 20 P
ID [mm]	49 – 159	92 – 320	282 – 500
ID [inch]	1.93 – 6.26	3.62 – 12.60	11.10 – 19.69
Wall thickness [mm] / [inch]	3 – 22 / 0.12 – 0.87	4 – 30 / 0.16 – 1.18	4 – 10 / 0.16 – 0.39
OD [mm]	56 – 168	100 – 355.6	290 – 508
OD [inch]	2.20 – 6.61	3.94 – 14.00	11.42 – 20
Pipe materials	Unalloyed and low-alloyed steels, high-alloyed steels (stainless steel), aluminum		

\* It is possible to extend the dimensions by using the optional clamping wedges (accessories).  
The technical data are not binding. They are not warranted characteristics and are subject to change. Please consult our general conditions of supply.

Info-Hotline: +49 (0) 77 31 792-787 up to 789



ehemals / formerly  
**+GF+**

© Orbitalum Tools GmbH  
(06.2007)  
Freibühlstraße 19, 78224 Singen, Deutschland  
Tel. +49 (0) 77 31 792-0, Fax +49 (0) 77 31 792-524  
www.orbitalum.com, tools@orbitalum.com  
An ITW Company

Code 790 700 219\_01