



...❖ One machine to cut tubes and elbows

RA 41 Plus

Pipe Cutting and Beveling Machine

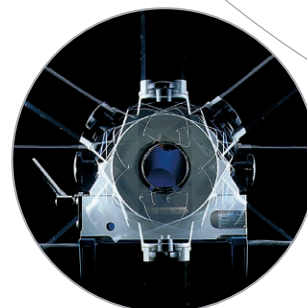
The solution for preparing thin-walled tubes, elbows and fittings!

Advantages:

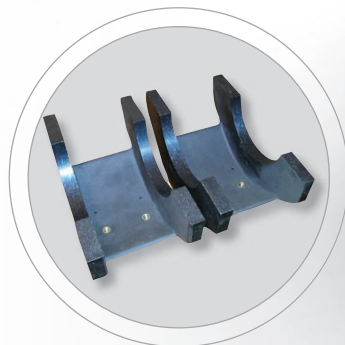
- Saw blade mountable in front and rear
- Deformation-free clamping system
- Dimension related clamping shells made of aluminum for thin-walled tubes
- Clamping jaws made of aluminum

Your benefits:

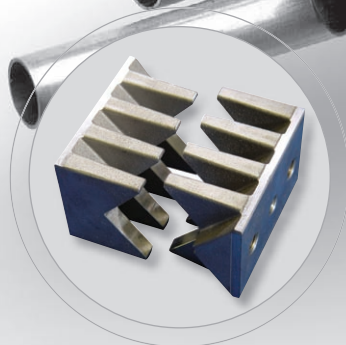
- One machine to cut tubes and elbows
- Effective and environmental friendly
- Optimal preparation for orbital welding
- Cutting of thin-walled tubes
- No contact corrosion while preparing stainless steel tubes
- Perfect for INOX applications



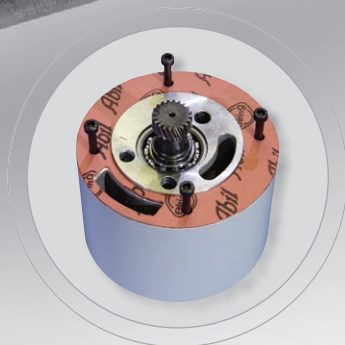
...❖ «Planetary Cutting Technology»



Aluminum clamping shells for deformation-free clamping of thin-walled tubes.



Aluminum clamping jaws for RA 4 and RA 41 Plus. Standard part of the RA 41 Plus. Code 790 046 250



Intermediate gear retrofit kit for RA machines. For reducing the cutting speed of the RA machine up to 40 – 70 rpm and more torque. For cutting of high-performance materials. Code 790 041 063



Quick-mounting base plate with integrated screw clamps for easy and fast mounting of the machine to the bench. Ideal for frequent location change. Code 790 042 027

Pipe Cutting and Beveling Machines

Technical data	RA 41 Plus	RA 41 Plus (H)*
Dimensions	700 x 490 x 460 mm (27.6 x 19.3 x 18.1 inch)	700 x 490 x 460 mm (27.6 x 19.3 x 18.1 inch)
Weight approx.	77 kg	79 kg
Power	1.6 kW	1.6 kW
Protection class	Totally insulated (class II, DIN VDE 0740)	Totally insulated (class II, DIN VDE 0740)
Speed	150 – 270 rpm	40 – 70 rpm
Versions	200 – 240 V, 50/60 Hz EU, Code 790 046 011 100 – 120 V, 50/60 Hz EU, Code 790 046 014 100 – 120 V, 50/60 Hz US, Code 790 046 012	200 – 240 V, 50/60 Hz EU, Code 790 046 017 100 – 120 V, 50/60 Hz EU, Code 790 046 030 100 – 120 V, 50/60 Hz US, Code 790 046 029
Vibration level (EN 28662, part 1)	< 2.5 m/s ²	< 2.5 m/s ²
Sound pressure level at workplace approx.	at idle: 76 dB (A) under load: 85 dB (A)	at idle: 76 dB (A) under load: 85 dB (A)

Working range	RA 41 Plus	RA 41 Plus (H)*
Tube OD (tubes)	10 – 120 mm (0.394 – 4.724 inch)	10 – 120 mm (0.394 – 4.724 inch)
Tube OD (elbows)	30 – 120 mm (1.181 – 4.724 inch)	30 – 120 mm (1.181 – 4.724 inch)
Wall thickness max. (depends on material)	0.6 – 7 mm (0.024 – 0.276 inch)	0.6 – 7 mm (0.024 – 0.276 inch)
Tube ID min. (saw blade-Ø 68 mm/2.677 inch)	16 mm (0.630 inch)	16 mm (0.630 inch)
Tube ID min. (saw blade-Ø 80 mm/3.150 inch)	4 mm (0.157 inch)	4 mm (0.157 inch)
Tube materials	Unalloyed and low-alloyed steel, high-alloyed steel (stainless steel, material no. 1.40... 1.45... in accordance with DIN 17455 and 17456), copper, brass, annealed cast-iron pipe (nodular graphite iron), aluminum. Consult Orbitalum Tools before using for other applications and/or materials.	

* Version RA 41 Plus (H) = with intermediate gear

The technical data are not binding. They are not warranted characteristics and are subject to change. Please consult our general conditions of supply.

Info-Hotline: +49 (0) 77 31 792-787 up to 789