



Quick Clamping
Systems for tubes

OTM 2.0

Orbital Cutting Machine

Chip free cutting of thin-walled stainless steel tubes up to 2".

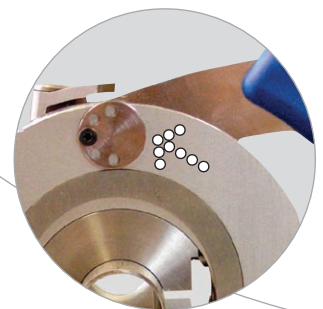
The optimal tube end preparation for welding joints conforming to industry standards.

Advantages:

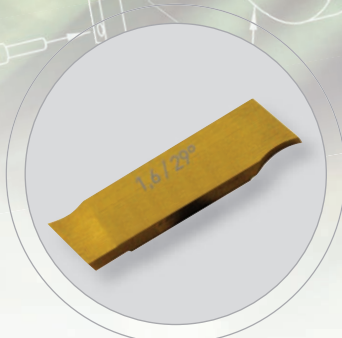
- Chip free
- Burr-free, square and deformation-free
- Orbital and automated cutting process
- Portable machine for a mobile and secure application
- 1 tool for different wall thicknesses (0.8 - 3 mm) and different pipe materials (only ferritic materials)
- Quick clamping system for tubes and tools and adjusting facility for compensating tube tolerances
- Built-in electronic speed regulation
- Restart protection
- Twistable / detachable drive
- Tool return to starting position is simple and does not require tools

Your benefits:

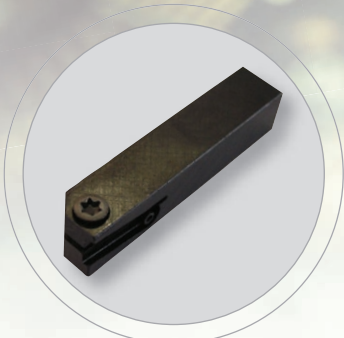
- Low initial costs
- Increased productivity
- Reduced manufacturing costs
- Mobile and secure operation, easy handling
- Clean-room suitable



Adjusting facility
for compensating
tube tolerances



High-performance coated machine knife with two cutting edges
(Code 790 022 737)



Tool holder
(Code 790 022 736)



Clamping shells for deformation-free clamping of thin-walled tubes



The ideal solution for weld preparation: the Tube Squaring Machines **RPG**: burr-free and square preparation of thin-walled tubes.

Orbital Cutting Machine OTM 2.0

Technical data / Working range

Dimensions (with drive)	350 x 250 x 220 mm / 13.8 x 9.8 x 8.7 inch
Total weight (without clamping shells)	8.0 kg
Output	1010 W
Protection class	Class II, DIN VDE 0740
Mains supply	200 - 240 V; 50 / 60 Hz (Code 790 022 701) 100 - 120 V; 50 / 60 Hz (Code 790 022 703)
Speed (maximum idle speed)	24 - 42 rpm
Noise pressure level at the workplace ^{*)}	At idle approx 75 dB (A)
Vibration level in accordance with EN 28662, Part 1	< 2.5 m/s ²
Tube OD min. - max.	6.35 - 50.80 mm (1/4 - 2 inch)
Wall thickness min. - max.	0.8 - 3 mm (0.032 - 0.118 inch)
Tube materials	High alloy steels (stainless steel material no. 1.40... - 1.45... in accordance with DIN 17 455 and DIN 17 456), non-alloy and low alloy steels, aluminum. Additional materials on request.

The technical data are not binding. They are not warranted and characteristics are subject to change. Please consult our General Conditions of Supply.

Info-Hotline: +49 (0) 77 31 792-787 up to 789



ehemals / formerly
+GF+

© Orbitalum Tools GmbH
(12.2006)

Freibühlstraße 19, 78224 Singen, Deutschland
Tel. +49 (0) 77 31 792-0, Fax +49 (0) 77 31 792-524
www.orbitalum.com, tools@orbitalum.com
An ITW Company

Code 790 700 314_01